



1 Validity

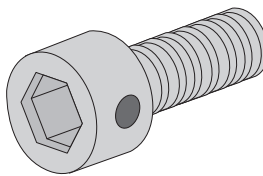
The sealing kit serves as verification as to whether the inverter has been subject to unauthorized opening and as protection against manipulation. The sealing kit can be used for the following inverter types:

- Sunny Central 500CP (SC 500CP-10)
- Sunny Central 630CP (SC 630CP-10)
- Sunny Central 720CP (SC 720CP-10)
- Sunny Central 760CP (SC 760CP-10)
- Sunny Central 800CP (SC 800CP-10)
- Sunny Central 500HE (SC 500HE-20)
- Sunny Central 630HE (SC 630HE-20)
- Sunny Central 720HE (SC 720HE-20)
- Sunny Central 760HE (SC 760HE-20)
- Sunny Central 800HE (SC 800HE-20)

This document describes the actions necessary in order to seal an inverter.

2 Scope of Delivery

Check the delivery for completeness and for any external damage. Contact your retailer if the delivery is incomplete or you find any damage.



Position	Quantity	Description
A	20*	Sealing screw

* 16 sealing screws are necessary for inverters of the Sunny Central CP production series and 14 sealing screws are necessary for inverters of the Sunny Central HE-20 production series. The remaining sealing screws are spares.

3 Sealing

3.1 Requirements for sealing

⚠ WARNING

Risk of death due to electric shock when live component parts of the central inverter are touched!

- Disconnect the central inverter before sealing.

- The sealing wires are provided by the customer.
- The seals are provided by the electric utility company.
- The central inverter is disconnected.

3.2 Sealing the front side of the connection cabinet

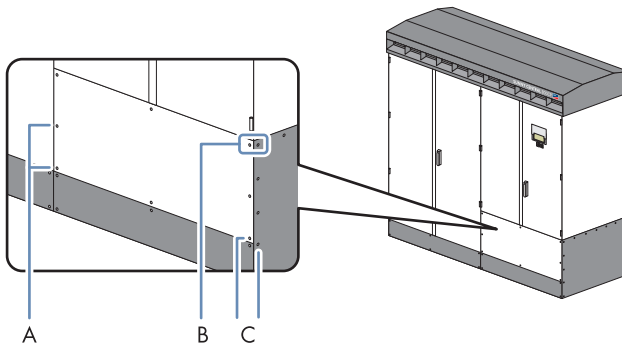


Figure 1: Positions of the screws for sealing (in this example a Sunny Central 500CP)

Position	Description
A	1st pair of screws
B	2nd pair of screws
C	3rd pair of screws

1. Remove the screws from the front and side panels using a Torx screwdriver. Put the washers safely to one side.
2. Insert the sealing screws with washers and tighten (torque 6 Nm).
3. Thread the sealing wire through the screw pairs.
4. Seal the sealing wire using the seal.

3.3 Sealing the rear side of the connection cabinet

3.3.1 Sealing the rear side of the connection cabinet on an outdoor installation

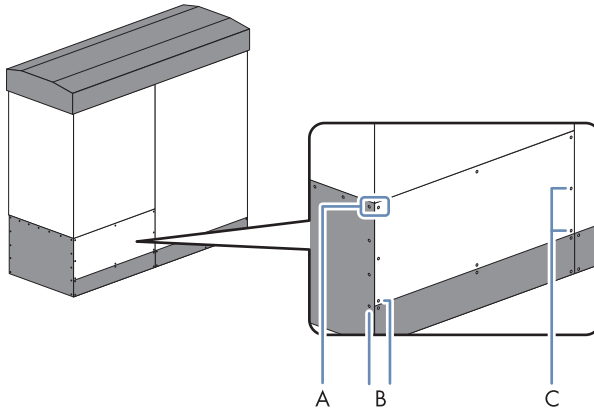


Figure 2: Positions of the screws for the sealing in Sunny Centrals of the CP production series

Position	Description
A	1st pair of screws
B	2nd pair of screws
C	3rd pair of screws

1. Remove the screws from the rear and side panels using a Torx screwdriver. Put the washers safely to one side.
2. Insert the sealing screws with washers and tighten (torque 6 Nm).
3. Thread the sealing wire through the screw pairs.
4. Seal the sealing wire using the seal.

3.3.2 Sealing the rear side of the connection cabinet on a station installation

If you have installed central inverters of the CP- and HE-20 production series in a station, the rear screws on the rear side of the connection cabinet are not accessible.

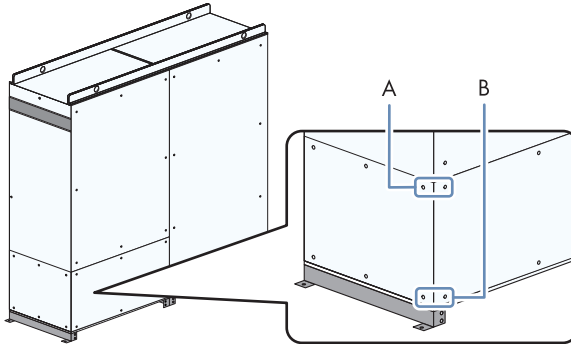


Figure 3: Positions of the screws for sealing in a station installation (using the example of a Sunny Central of the HE-20 production series)

1. If the screws on the rear panel are accessible, remove the screws from the rear and side panels using a Torx screwdriver. Put the washers safely to one side.
2. If the screws on the rear panel are not accessible, only remove the screws from the side panel using a Torx screwdriver. Put the washers safely to one side.
3. Insert the sealing screws with washers and tighten (torque 6 Nm).
4. Thread the sealing wire through the screw pairs.
5. Seal the sealing wire using the seal.

3.4 Sealing the protective cover of the AC contactor

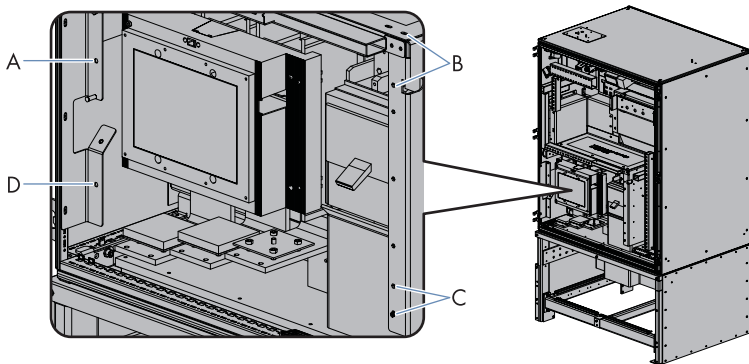
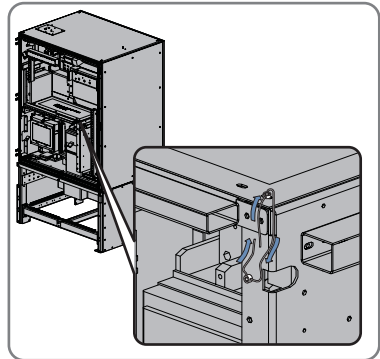


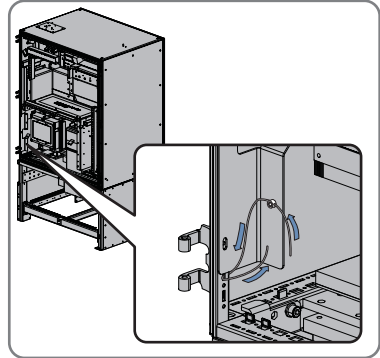
Figure 4: Positions of the screws for sealing in the protective cover of the AC contactor

Position	Description
A	Screw and switch cabinet frame
B	2nd pair of screws
C	3rd pair of screws
D	Screw and switch cabinet frame

1. Open the inverter cabinet.
2. Remove the protective cover screws using a hexagon-socket wrench. Put the washers safely to one side.
3. Insert the sealing screws with washers and tighten (torque 2 Nm).
4. Thread the sealing wire through the sealing screws.



5. Thread the sealing wire through the sealing screws and switch cabinet frame.



6. Seal the sealing wire using the seals.
7. Close the inverter cabinet.

3.5 Sealing the door locks on Sunny Centrals of the CP production series

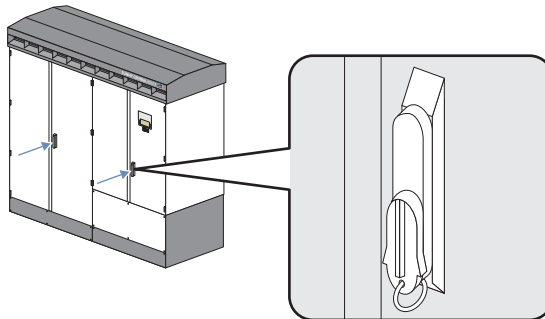


Figure 5: Positions of the door locks on Sunny Centrals of the CP production series

1. Thread the sealing wire through the door lock.
2. Seal the sealing wire using the seal.